



Measurement & Control Technology

For process and laboratory analyses

JUNE 2015

NEWSLETTER

PROJECTS & EXHIBITIONS



Zellcheming exhibition Frankfurt

Our partners FRANK-PTI and ProMTec will attend the Zellcheming exhibition in Frankfurt from the 30th of June until the 2nd of July. You will find FRANK-PTI on booth 11.0-C10. They present our laboratory instruments for the pulp and paper industry.

You will find ProMTec on booth 11.0-E31. They present our solutions for in-line concentration measurements.

Click on the ZELLCHEMING logo for more information about this exhibition.

[A free entrance ticket can be downloaded here.](#)



In-line concentration measurement



Micrometer



BauerMcNett classifier



Tensile Tester

Absorption Tester for INNVENTIA in Sweden



Automatic absorption tester



Boosting business with science

The very well respected research institute INNVENTIA in Sweden has recently put an automatic absorption tester from M.C. TEC into operation. This absorption tester is used for research on absorption of liquids (inks) when printing packaging. The big advantage of this absorption tester compared to other methods is that the absorption can be measured with different contact times in one test run.

Click on the picture for more information about this instrument.



2 Portal detectors at Ecore in Gent

Portal Detectors for Dumont-Wautier, Koster Metalen, Hospital Liege and Ecore.

During the last few months M.C. TEC has delivered and installed a number of portal detectors at various sites.

At **Dumont-Wautier** in Saint Georges sur Meuse (near Liege) we installed a portal detector in a very remote location. The measurement data and the alarms are send over the network to the control room. We also delivered our handheld devices at this site.

At **Koster metalen** in Beverwijk we replaced an old portal detector by our new portal detector. The disassembling of the old portal detector and the installation of the new system has been done on a Saturday due to the heavy traffic during the week. Also a new handheld device is delivered at this site.

In one of the hospitals in Liege (**CHU de Liege**) we installed a portal detector for detecting



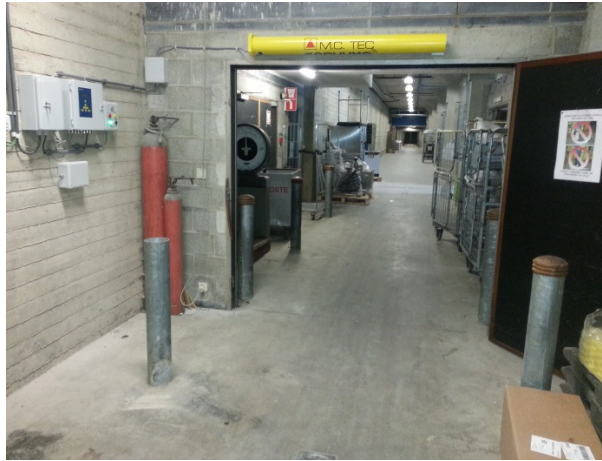
Portal Detector at Koster Metalen in Beverwijk



Portal Detector at Dumont Wautier

radioactive material in hospital waste. This installation makes it possible to be absolutely sure that no radioactive material goes to the waste incinerators. These systems have a smaller detector than the portal detectors for trucks as you can see in the picture below.

At **Ecore Gent** M.C. TEC has installed 2 portal detectors this year. There was already one portal detector on this site which has been replaced to another location. Besides this another portal detector is installed by M.C. TEC.



Detection system for CHU de Liege with one detector above the door



On-line NIR moisture meter for measuring moisture in sludge from waste water

Moisture measurement equipment for Knauf & Saint-Gobain.

We have installed our moisture sensors at various sites during the last few months. At gypsum boards manufacturers Saint Gobain (Rigips) and Knauf we installed our (RF) moisture sensors for measuring the moisture in the gypsum boards. Our moisture sensors are installed in the oven/kiln and after the oven/kiln. By using our moisture sensors it is possible to optimize the dryer and realize a homogeneous drying of the gypsum boards. This improves the quality of the board and the efficiency of the dryer (and energy).

On other project our (NIR) moisture sensors are used for measuring the moisture content of sludge from waste water. We also installed our moisture sensors for measuring glass wool and rock wool at sites from Knauf and Rockwool.

When you would like to know more about what our moisture sensors can do for you please don't hesitate to contact us.



Test button for portal detector.

According to the regulations in Belgium a site that has a portal detector must do a system test when there was no alarm during 30 days. To be able to do this test without a radioactive test source we can install a test button on the detectors. With this test button it is possible to generate an alarm electronically.

This test button can be a normal push button or a key switch. By pushing the test button we generate electronically a number of pulses which generates the alarm in the detector. By doing this the required self-test has been done.

[Download here more information about this possibility.](#)

M.C. TEC BV is a key supplier of high-tech measurement instruments for process and laboratory analyses. Our customer are the industry, research center and government. Quality, customer satisfaction and service are very important for us.

Above a limited overview of our possibilities is given. We would be happy to send you more information. We would also be happy to make an appointment and advice you further of our possibilities. Don't hesitate to send an email to info@mctec.nl for more information. A visit of our website will also give you additional information about our delivery program.

Unsubscribe can be easily done by sending an email to ah@mctec.nl with the subject "unsubscribe newsletter".

M.C. TEC BV

Distributiestraat 27
4283 JN Giessen
The Netherlands

Phone: +31-(0)183-445050

Fax: +31-(0)183-445059

Email: info@mctec.nl

Website: <http://www.mctec.nl>

Instrumentation for measuring:

- Moisture
- Radioactivity
- Paper & Cardboard testing
- Concentration
- XRF Element analyses